

DirectoryInsight™

Managing Change in Active Directory™

The decision to move to Active Directory may very well be the most important IT initiative your company ever takes on. The success of its implementation stretches past deployment and into the day-to-day maintenance of a new and highly complex directory service that impacts every department and end user in the company. It's a moving target that will require hands-on management. Are you prepared to handle it?

What processes do you have in place to manage Active Directory change that occurs as a result of mergers, acquisitions and other changing business needs? How will you keep track of population changes as you bring sites, domain controllers, and global catalogs online? How will you manage site configuration changes, bridgehead server modifications, shifting FSMO roles, and schema alterations? And how are you going to manage, store and report on those changes over time?

Manage change in Active Directory with DirectoryInsight.

NetPro's DirectoryInsight is the only solution available to help administrators effectively plan, monitor and report on Active Directory change. DirectoryInsight tracks the population of directory objects over time and records configuration and infrastructure changes, allowing you to easily monitor current modifications and report on historical Active Directory changes. You'll glean valuable insight from the change data that DirectoryInsight delivers. And, you'll have a central repository of that data, enabling you to report on the status of Active Directory at all times. And all of this information is accessible anytime and anywhere through a web browser. No matter what stage of your directory deployment, DirectoryInsight is an indispensable tool for keeping directory change under control.

Monitor object population growth at an enterprise level.

Whether your company is migrating to Active Directory or merging with another company, population changes will have a profound impact on your

directory. DirectoryInsight provides historical population graphs, and delivers an enterprise-level view of additions and deletions of the most common directory objects. You'll be able to view categorical object population changes that will help you monitor and report on the growth of Active Directory over time. And if you use directory object counts as a metric for capacity planning, DirectoryInsight's population reports will provide guidance as you plan for future IT purchases.

Automatically track configuration and infrastructure changes.

As Active Directory grows, you'll have to make replication, structure, security, and schema changes to accommodate new operational needs. You'll also make changes to fine-tune the directory for maximum performance. Because modifications to the directory are so critical to network performance, many companies keep a manual log of the changes as backup. DirectoryInsight is the only solution that automatically tracks all directory infrastructure and configuration changes in a central, secure repository, eliminating the need for hand-written or typed change logs.

Automate change control monitoring and reporting.

Today, tracking change in Active Directory requires that you operate within the guidelines of corporate change control policy. If you're like most, you have to document all changes, coordinating with various members of your IT staff along the way, to ensure that documents are not overwritten by older versions and that change control documents are current and reliable. With DirectoryInsight, you can log all changes automatically and share the information with everyone who needs it through a convenient web browser.

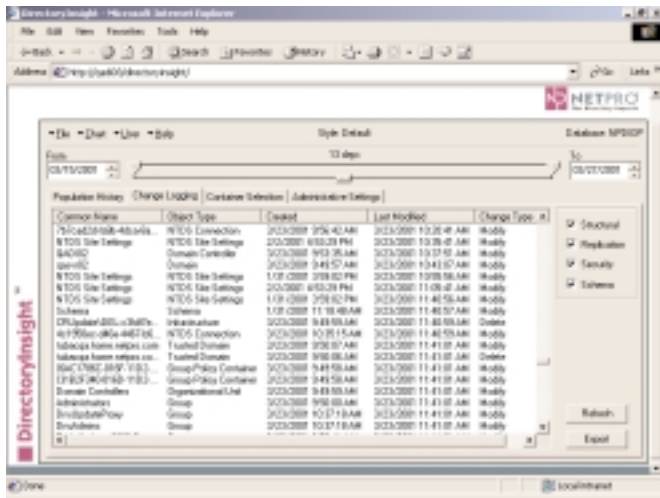
Perform cause-and-effect directory analysis.

When distress calls come in from users who are all reporting the same symptoms, you know something's wrong, and you know it's your job to fix it. But, where

do you begin? When the directory appears to be the culprit, recent infrastructure, schema or configuration changes are often the cause. DirectoryInsight provides critical data to streamline the troubleshooting process. From schema alterations to replication configuration changes, you can use the information to identify fixes and reverse changes if necessary. With DirectoryInsight's central change log, you'll know what types of changes occurred, and where and when alterations were made. Without this important information, you could spend hours troubleshooting these problems.

Report on current and historical changes.

DirectoryInsight stores all population and structural change data centrally, enabling you to run current and historical reports quickly and easily. The software provides a host of reporting options to help you illustrate the progress of your deployment and the types of Active Directory change that occurs at any given time. With DirectoryInsight, you won't waste precious time developing manual object counts and logs to report on Active Directory modifications.



DirectoryInsight automatically tracks all structural and configuration modifications to Active Directory, eliminating the need to keep manual change logs. With DirectoryInsight, you can retrieve current and historical data on all critical Active Directory changes.

DirectoryAnalyzer™ and DirectoryInsight – the Active Directory management team.

In addition to DirectoryInsight, NetPro offers DirectoryAnalyzer, the premier solution for monitoring and troubleshooting Active Directory. Award-winning DirectoryAnalyzer ensures the reliability and performance of such key infrastructure components as replication, Active Directory-related DNS functions, domain controllers, global catalogs, operations masters, domains, and sites. It is the only solution that alerts you immediately to the type and location of your directory problems and enables you to troubleshoot issues before they impact network performance. DirectoryAnalyzer also ensures fast and efficient problem resolution through its unmatched knowledge base.

DirectoryInsight at a glance...

- Centralizes access to Active Directory infrastructure and configuration changes in a secure log
- Enables you to plan and manage Active Directory growth during deployment and beyond
- Displays object population counts over time, including:
 - GPOs
 - Groups
 - OUs
 - Domains
 - DCs
 - Servers/computers
 - Sites
 - Users
- Automates change control process
- Reports on current and historical changes

Together DirectoryInsight and DirectoryAnalyzer provide the most comprehensive solution available to manage Active Directory change and ensure its reliability and performance. Count on NetPro to proactively manage Active Directory 24x7 and save you time, effort, money, and downtime.

NetPro...the experts behind DirectoryInsight.

NetPro is the leading provider of software for managing critical e-business and enterprise directories. NetPro's award-winning solutions ensure proactive, continuous management of the directory, enabling organizations to reduce administrative costs, minimize network downtime and optimize resources. NetPro has been building directory management software since 1991, beginning with Banyan's StreetTalk, the first enterprise-scale network directory. This success paved the way for the development of solutions to manage Novell® Directory Services (NDS) eDirectory™ and Microsoft's Active Directory. With support from Microsoft, NetPro has added DirectoryAnalyzer and DirectoryInsight to its family of world-class directory management software. DirectoryInsight is just one of the many software solutions that demonstrate our commitment to keeping the world's directories working.

For more information about DirectoryInsight, visit our web site at www.netpro.com/products/directoryinsight. Or call NetPro at 800.998.5090, Fax 480.941.3610. Outside the U.S. call 480.941.3630. Email requests to: info@netpro.com.

Trust NetPro.
The Directory Is Our Domain.™



7150 East Camelback Road, Suite 100 Scottsdale, Arizona 85251

NetPro® and NetPro Computing® are registered trademarks of NetPro Computing, Inc. DirectoryInsight™, DirectoryAnalyzer® and the NetPro logos are trademarks of NetPro Computing, Inc. Microsoft®, Windows® 2000 Server and Active Directory™ are either registered trademarks or trademarks of Microsoft Corporation. 0104